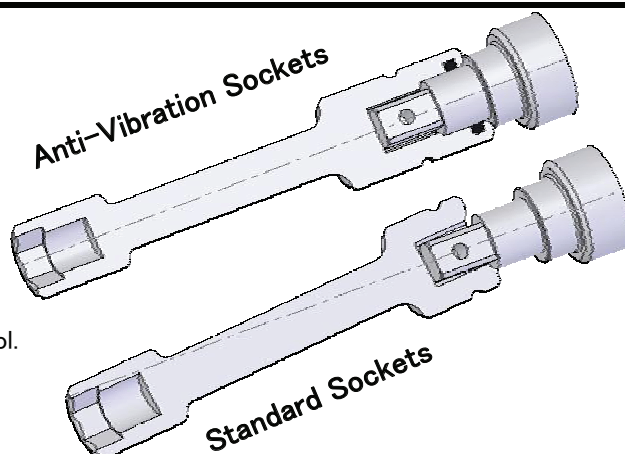


AV (Anti-Vibration) Sockets

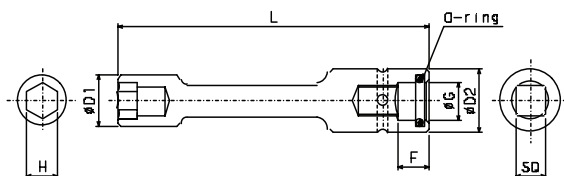
AV-type Anti-Vibration Sockets

- Fatigue-free operation.
- Minimizing torque loss.
- Cost reduction by longer life of socket and tool.
- Increasing productivity.

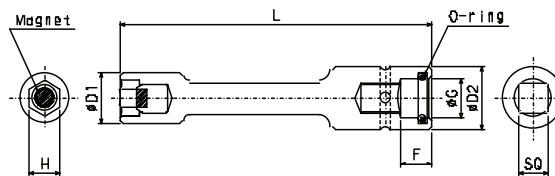


9.52mm (3/8")

● Standard type



● Magnetic type



【 Spec. 】

Part No.	SQ (mm)	H (mm)	φ D1 (mm)	φ D2 (mm)	F (mm)	φ G (mm)	L (mm)
AV310EX100	9.52	10	16	20	10	12	100
AV310EX150	9.52	10	16	20	10	12	150
AV310EX200	9.52	10	16	20	10	12	200
AV310EX250	9.52	10	16	20	10	12	250
AV310EX300	9.52	10	16	20	10	12	300
AV312EX100	9.52	12	20	20	10	12	100
AV312EX150	9.52	12	20	20	10	12	150
AV312EX200	9.52	12	20	20	10	12	200
AV312EX250	9.52	12	20	20	10	12	250
AV312EX300	9.52	12	20	20	10	12	300
AV313EX100	9.52	13	21	20	10	12	100
AV313EX150	9.52	13	21	20	10	12	150
AV313EX200	9.52	13	21	20	10	12	200
AV313EX250	9.52	13	21	20	10	12	250
AV313EX300	9.52	13	21	20	10	12	300
AV314EX100	9.52	14	22	20	10	12	100
AV314EX150	9.52	14	22	20	10	12	150
AV314EX200	9.52	14	22	20	10	12	200
AV314EX250	9.52	14	22	20	10	12	250
AV314EX300	9.52	14	22	20	10	12	300
AV315EX100	9.52	15	23	20	10	12	100
AV315EX150	9.52	15	23	20	10	12	150
AV315EX200	9.52	15	23	20	10	12	200
AV315EX250	9.52	15	23	20	10	12	250
AV315EX300	9.52	15	23	20	10	12	300

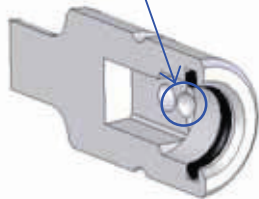
【 Spec. 】

MP TYPE (fixed magnet)

Part No.	SQ (mm)	H (mm)	φ D1 (mm)	φ D2 (mm)	F (mm)	φ G (mm)	L (mm)
AV310EMP100	9.52	10	16	20	10	12	100
AV310EMP150	9.52	10	16	20	10	12	150
AV310EMP200	9.52	10	16	20	10	12	200
AV310EMP250	9.52	10	16	20	10	12	250
AV310EMP300	9.52	10	16	20	10	12	300
AV312EMP100	9.52	12	20	20	10	12	100
AV312EMP150	9.52	12	20	20	10	12	150
AV312EMP200	9.52	12	20	20	10	12	200
AV312EMP250	9.52	12	20	20	10	12	250
AV312EMP300	9.52	12	20	20	10	12	300
AV313EMP100	9.52	13	21	20	10	12	100
AV313EMP150	9.52	13	21	20	10	12	150
AV313EMP200	9.52	13	21	20	10	12	200
AV313EMP250	9.52	13	21	20	10	12	250
AV313EMP300	9.52	13	21	20	10	12	300
AV314EMP100	9.52	14	22	20	10	12	100
AV314EMP150	9.52	14	22	20	10	12	150
AV314EMP200	9.52	14	22	20	10	12	200
AV314EMP250	9.52	14	22	20	10	12	250
AV314EMP300	9.52	14	22	20	10	12	300
AV315EMP100	9.52	15	23	20	10	12	100
AV315EMP150	9.52	15	23	20	10	12	150
AV315EMP200	9.52	15	23	20	10	12	200
AV315EMP250	9.52	15	23	20	10	12	250
AV315EMP300	9.52	15	23	20	10	12	300

AV (Anti-Vibration) Sockets

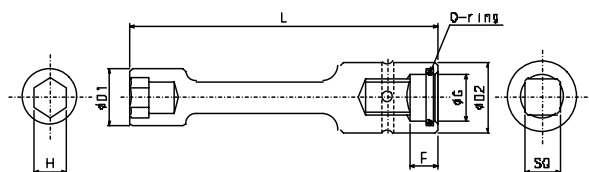
GS (Guide-Slope)



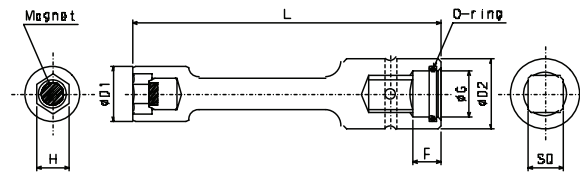
- * Tool anvils differ in ϕG . Please advise us the name of tool's maker.
- * The plunger type of tool anvil needs a guide slope (GS) inside the square drive of the socket.
- * The working length of the socket is shorter by F dimension (The standard F : 10mm)

12.7mm (1/2")

● Standard type



● Magnetic type



【 Spec. 】

Part No.	SQ (mm)	H (mm)	$\phi D1$ (mm)	$\phi D2$ (mm)	F (mm)	ϕG (mm)	L (mm)
AV412EX100	12.7	12	20	25	10	16	100
AV412EX150	12.7	12	20	25	10	16	150
AV412EX200	12.7	12	20	25	10	16	200
AV412EX250	12.7	12	20	25	10	16	250
AV412EX300	12.7	12	20	25	10	16	300
AV413EX100	12.7	13	21	25	10	16	100
AV413EX150	12.7	13	21	25	10	16	150
AV413EX200	12.7	13	21	25	10	16	200
AV413EX250	12.7	13	21	25	10	16	250
AV413EX300	12.7	13	21	25	10	16	300
AV414EX100	12.7	14	22	25	10	16	100
AV414EX150	12.7	14	22	25	10	16	150
AV414EX200	12.7	14	22	25	10	16	200
AV414EX250	12.7	14	22	25	10	16	250
AV414EX300	12.7	14	22	25	10	16	300
AV415EX100	12.7	15	23	25	10	16	100
AV415EX150	12.7	15	23	25	10	16	150
AV415EX200	12.7	15	23	25	10	16	200
AV415EX250	12.7	15	23	25	10	16	250
AV415EX300	12.7	15	23	25	10	16	300
AV416EX100	12.7	16	26	25	10	16	100
AV416EX150	12.7	16	26	25	10	16	150
AV416EX200	12.7	16	26	25	10	16	200
AV416EX250	12.7	16	26	25	10	16	250
AV416EX300	12.7	16	26	25	10	16	300
AV417EX100	12.7	17	28	28	10	16	100
AV417EX150	12.7	17	28	28	10	16	150
AV417EX200	12.7	17	28	28	10	16	200
AV417EX250	12.7	17	28	28	10	16	250
AV417EX300	12.7	17	28	28	10	16	300

【 Spec. 】

MP TYPE (fixed magnet)

Part No.	SQ (mm)	H (mm)	$\phi D1$ (mm)	$\phi D2$ (mm)	F (mm)	ϕG (mm)	L (mm)
AV412EMP100	12.7	12	20	25	10	16	100
AV412EMP150	12.7	12	20	25	10	16	150
AV412EMP200	12.7	12	20	25	10	16	200
AV412EMP250	12.7	12	20	25	10	16	250
AV412EMP300	12.7	12	20	25	10	16	300
AV413EMP100	12.7	13	21	25	10	16	100
AV413EMP150	12.7	13	21	25	10	16	150
AV413EMP200	12.7	13	21	25	10	16	200
AV413EMP250	12.7	13	21	25	10	16	250
AV413EMP300	12.7	13	21	25	10	16	300
AV414EMP100	12.7	14	22	25	10	16	100
AV414EMP150	12.7	14	22	25	10	16	150
AV414EMP200	12.7	14	22	25	10	16	200
AV414EMP250	12.7	14	22	25	10	16	250
AV414EMP300	12.7	14	22	25	10	16	300
AV415EMP100	12.7	15	23	25	10	16	100
AV415EMP150	12.7	15	23	25	10	16	150
AV415EMP200	12.7	15	23	25	10	16	200
AV415EMP250	12.7	15	23	25	10	16	250
AV415EMP300	12.7	15	23	25	10	16	300
AV416EMP100	12.7	16	26	25	10	16	100
AV416EMP150	12.7	16	26	25	10	16	150
AV416EMP200	12.7	16	26	25	10	16	200
AV416EMP250	12.7	16	26	25	10	16	250
AV416EMP300	12.7	16	26	25	10	16	300
AV417EMP100	12.7	17	28	28	10	16	100
AV417EMP150	12.7	17	28	28	10	16	150
AV417EMP200	12.7	17	28	28	10	16	200
AV417EMP250	12.7	17	28	28	10	16	250
AV417EMP300	12.7	17	28	28	10	16	300