



# SOLUTION MAGNETIC SOCKET PAT. P.P.

This is a solution to avoid the demerits of conventional magnetic socket.

We have sometimes found the following problems.

Types of magnet	Applicable work	Demerit
Fixed (MP)	Bolt	Not usable for low head bolt / recess bolt.
Sliding (MS)	Bolt • Nut	Possibly defective in the long stroke / Not available in the short length.
Side (SM)	Bolt • Nut	The magnet force is lower.
Tube (MT)	Bolt • Nut	The risk of magnet's breakage is relatively high./ The magnet force is lower in some cases.

To solve the problems above, we developed the new type of magnetic socket.

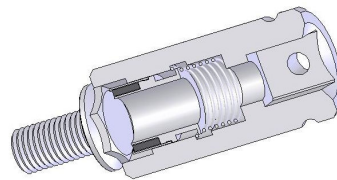
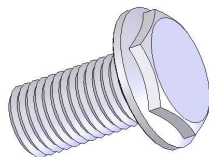
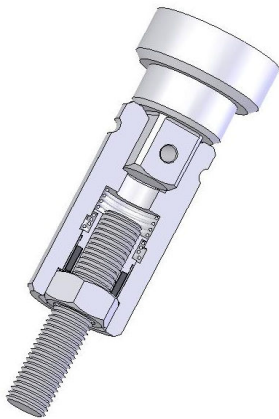
The MF type : The tube magnet moves forward and backward. (See the application below.)

The move cushions the impact of bolt's catching ; it reduces the risk of tube MG's breakage

MF type

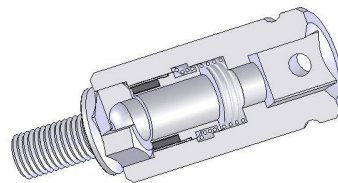
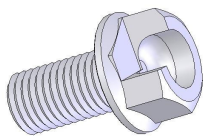
Low head bolt

MF tube magnet moves forward to catch the bolt.



Recess bolt

MF tube magnet doesn't miss to catch the bolt.



## EXAMPLE

